

A NEW GENUS AND SPECIES OF POEMENIINI (HYMENOPTERA:
ICHNEUMONIDAE) FROM CHINA

MAO-LING SHENG

The Key Laboratory for Silviculture and Conservation of Ministry of Education, Beijing Forestry University, Beijing 100083, China; General Station of Forest Pest Management, State Forestry Administration, Shenyang, Liaoning, 110034, China (e-mail: shengmaoling@163.com)

Abstract. *Dolichotrochanter* Sheng, n. gen., and *Dolichotrochanter peculiaris* Sheng, n. sp., belonging to the tribe Poemeniini of the subfamily Poemeniinae (Ichneumonidae), from Henan Province, China, are described.

Key Words: Hymenoptera, Ichneumonidae, Poemeniinae, Poemeniini, *Dolichotrochanter*, new genus, new species

Poemeniini, a small tribe belonging to the subfamily Poemeniinae of the Ichneumonidae, comprises eight genera (Wahl and Gauld 1998). Six genera have been reported in China (Sheng 1998, Wang and Gupta 1995, Yu and Horstmann 1997). In this article, I describe one new genus and its type species collected in China.

The morphological terminology follows Wahl and Gauld (1998).

***Dolichotrochanter* Sheng, new genus**

Description.—Forewing about 10 mm long. Clypeus small, nearly quadrate, about 1.1X as wide as long, basal half strongly convex, rest impressed, apex nearly truncate. Apex of mandible with single chisel-like tooth. Gena in profile about as long as eye, its upper half coarsely scabrous. Occipital carina complete. Notauli strong. Forewing vein 1cu-a basad of 1/M, distance between them about 0.6X as long as 1cu-a. Areolet present. Second trochanter of hind leg

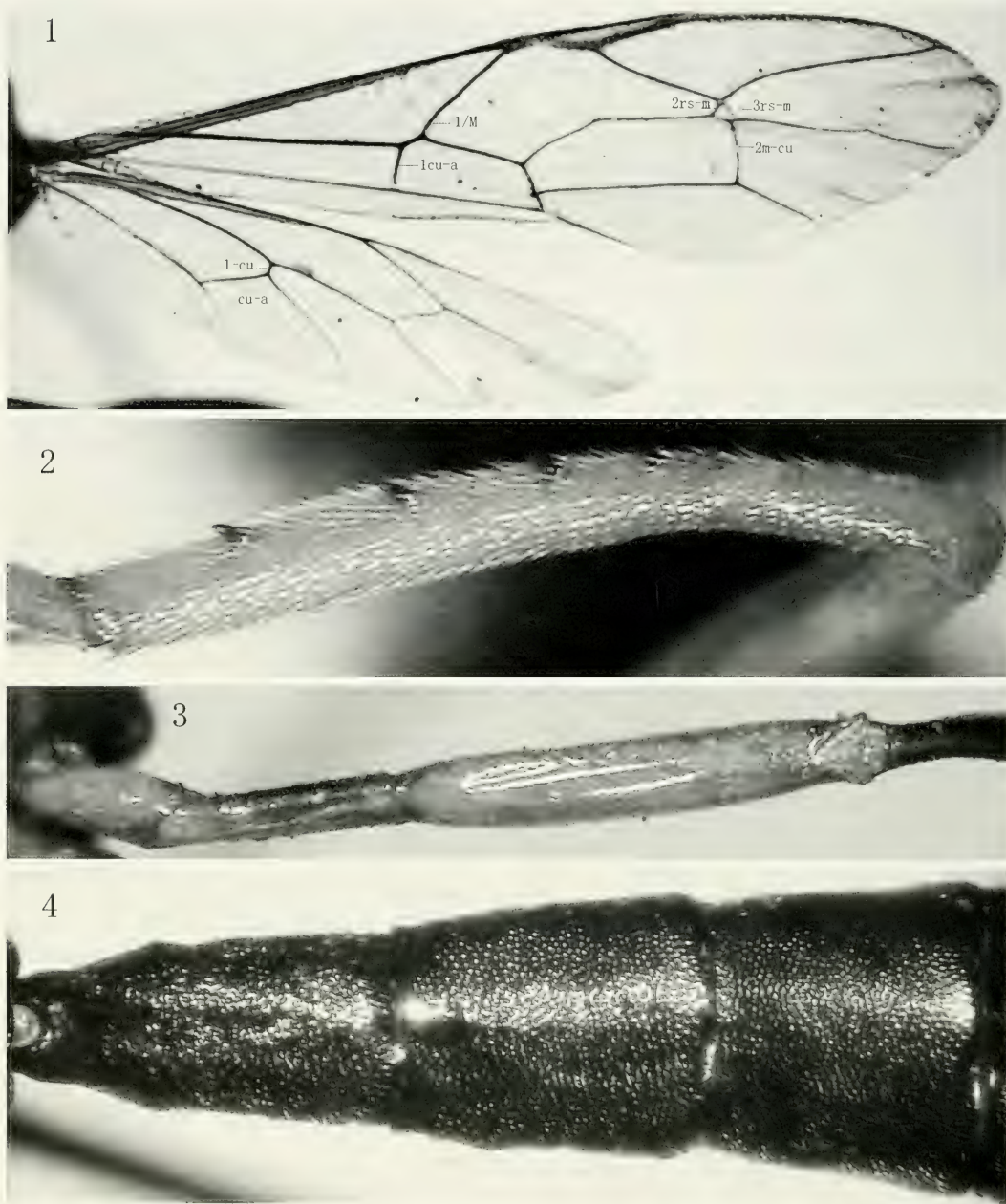
very long, ventral side (the longest side) about 0.5 to 0.6X as long as hind femur. Posterior tarsal claw of hind leg with a strong ventral tooth, anterior tarsal claw simple. Metasoma with tergite 1 about 2X as long as posteriorly broad. Tergites 1 to 5 with dense punctures. Last tergite wide, depressed and elongate. Ovipositor sheath about as long as front wing. Ovipositor slender, strongly compressed, lower valve tip with about 7 strong subvertical ridges.

Type species.—*Dolichotrochanter peculiaris* Sheng, n. sp.

Species and distribution.—There is a single Chinese species, described below.

Autapomorphies.—Second trochanter of hind leg very long, its ventral side (the longest side) about 0.5X as long as hind femur; posterior tarsal claw of hind leg with a strong ventral tooth, anterior tarsal claw simple.

Etymology.—The genus name is based on the very long second trochanter of the hind leg. Gender: masculine.



Figs. 1-4. *Dolichotrochanter peculiaris*. 1, Wings. 2, Front tibia, lateral view. 3, Hind trochanters and femur, ventral view. 4, Tergites 1-3.

Dolichotrochanter peculiaris Sheng,
new species
(Figs. 1-4)

Diagnosis.—This species can be distinguished from other poemeniines by

the characters given above in the generic description.

Female.—Body 14 mm long. Inner margin of eyes ventrally convergent. Supraclypeal area strongly convex, with rather sparse punctures, about $9.5\times$

wider than narrowest length. Clypeal suture straight, short and deep. Basal portion of clypeus smooth, apical portion with brown hairs, apical margin simple. Malar space very narrow, about $0.1\times$ as long as basal width of mandible, with fine granular surface. Vertex inflated, with uneven fine punctures, smooth behind interocellar area. Supra-antennal area nearly smooth, front portion concave. Antenna filiform with 34 flagellomeres. Occiput mediodorsally flat. Front portion of pronotum smooth, shiny, front and hind margin with dense punctures. Mesoscutum with dense punctures and oblique longitudinal wrinkles centrally. Front and lower portion of mesopleuron with punctures, middle part with oblique wrinkles and short sculpture, speculum and portion under mesopleural fovea smooth. Scutellum and postscutellum nearly flat, with dense punctures. Metapleuron swollen, with dense punctures. Forwing vein 2m-cu with two bullae. Hind wing veins 1-cu $0.25\times$ as long as cu-a, the latter strongly reclivous. Front side of front tibia with 4 large spines (Fig. 2). Propodeum with dense punctures, middle portion with fine transverse wrinkles. Propodeal spiracle at midpoint, elliptical and very close to pleural carina. Metasomal tergites with dense punctures, but gradually weak and unclear from tergite 5 to tergite 7. Tergite 1 without distinct lateral longitudinal carina, middle portion with transverse wrinkles, fused with sternite 1. Tergite 2 without groove, about $1.2\times$ as long as its apical width. Tergites 3 to 5 nearly as long as its width. Tergite 6 and 7 slightly transverse.

Color: Black; palpi and tegula yellow. Front and middle legs, except blackish brown front and middle 5th tarsal segments, and ventral sides of first trochanters of hind legs, yellowish brown. Hind coxa, ventral sides of second trochanters, femora except black-

ish dorsal sides reddish brown; rest blackish brown. Wings (Fig. 1) brownish hyaline. Stigmata light brown. Veins blackish brown.

Male.—Unknown.

Type material.—Holotype ♀, China: Ganshan Park, 1000 m, Shanxian County, Henan Province, May 31, 2000, Meicai Wei and Yi-hai Zhong. Deposited in the General Station of Forest Pest Management (GSFPM), State Forestry Administration, Shenyang, Liaoning, China.

Host.—Unknown.

Etymology.—The species name is based on the peculiar second trochanter of the hind leg.

Discussion.—This new genus can be distinguished from other genera of the tribe Poemeniini by: 1cu-a basad of 1/M by about $0.6\times$ its length; areolet present; and second trochanter of hind leg very long, ventral side (the longest side) about $0.5\times$ as long as the hind femur.

In the key to the tribes and genera of Poemeniinae (Wahl et Gauld 1998), the new genus can be inserted as follows:

- 6. Forewing vein 3rs-m present, enclosing an obliquely rhombic areolet 7
- Forewing vein 3rs-m completely absent, with no trace of areolet 8
- 7. Forewing vein 2m-cu with two bullae . . . 7'
- Forewing vein 2m-cu with one bulla. Afrotropical Region (South Africa) *Guptella*
- 7'. Posterior tarsal claw of hind leg with a strong ventral tooth. Gena in profile about as long as eye. 1cu-a basad of 1/M by about $0.6\times$ its length. Eastern Palaearctic Region (China) . . . *Dolichotrochanter*, n. gen.
- Claws of hind leg simple. Gena in profile about $0.4\times$ as long as eye. 1cu-a basad of 1/M by about 0.3 its length. Neotropical Region *Ganodes*

ACKNOWLEDGMENTS

I express sincere thanks to Prof. Dr. K. Schönitzer, Zoologische Staatssammlung München, Germany, for his kind-

ness in offering valuable material. Financial support from the National Natural Science Foundation of China (NSFC, No. 30471397) is thankfully acknowledged.

LITERATURE CITED

- Sheng, M.-L. 1998. Study on the genus *Neoxorides* from Northeastern China (Hymenoptera, Ichneumonidae). *Acta Zootaxonomica Sinica* 23: 201–204.
- Wahl, D. B. and I. D. Gauld. 1998. The cladistics and higher classification of the Pimpliformes (Hymenoptera: Ichneumonidae). *Systematic Entomology* 23: 265–298.
- Wang, S. F. and V. K. Gupta. 1995. Studies on the tribe Neoxoridini from China (Hymenoptera: Ichneumonidae: Pimplinae). *Oriental Insects* 29: 175–184.
- Yu, D. S. and K. Horstmann. 1997. A catalogue of world Ichneumonidae (Hymenoptera). *Memoirs of the American Entomological Institute*. 58, 1,558 pp.